

MODEL 65114

STAINLESS STEEL, SINGLE-COLUMN COMPRESSION LOAD CELL

APPLICATIONS

- Truck scales
- Tank, bin and hopper weighing

FEATURES

- Rated capacities of 50,000 to 100,000 pounds;
25 to 50 metric tons
- Stainless steel, welded seal construction
- 30 feet standard cable length
- Fully hermetically sealed available to IP66/68 standards
- Trade certified for NTEP Class IIIIL:10,000 divisions and
OIML R60 3,000 divisions
- Welded **Sensorgage™** sealed to IP67 standards
- **Cell Guard™** Two Year Warranty
- Factory Mutual System Approved for Classes I, II, III;
Divisions 1 and 2; Groups A through G.
Also, **Non-Incendive** ratings (No Barriers!).
- ISO 9001 Certified manufacturing facilities



Les Balances LEDUC & THIBEAULT Inc.

Montréal : (514) 239-7060 Mercier : (450) 691-2111 Fax : (450) 691-6764
visit our website at www.leduc-thibeault.com E-mail: info@leduc-thibeault.com

Model 65114 Performance Specifications

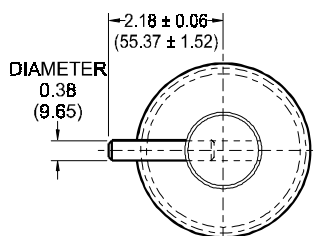
Rated Capacities (lbs): 50K, 100K
 (metric tons): 25t, 35t, 50t
 Full Scale Output (FSO): 2.0 mV/V ± 0.25%

Accuracy Class:	Standard	NTEP IIII	OIML R60
Max. No. Verification Intervals	--	10,000 Multiple	3,000
Combined Error % FSO	≤ 0.03	--	--
Non-Linearity % FSO	≤ 0.02	--	--
Hysteresis % FSO	≤ 0.02	--	--
Creep Error % FSO	≤ 0.05 in twenty minutes	--	--
Temperature Effect on:			
• Zero % FSO/°F	≤ 0.0015	--	--
• Output % of Load/°F	≤ 0.0008	--	--
Non-Repeatability % FSO		≤ .01	
Zero Balance % FSO		≤ 1.0	
Insulation Resistance		> 1000 Mohms at 50VDC	
Compensated Temperature Range		14° to 104°F / -10° to 40°C	
Operating Temperature Range		0° to 150°F / -18° to 65°C	
Storage Temperature Range		-60° to 185°F / -50° to 85°C	
Input Resistance		1000 Ohms Nominal	
Output Resistance		1000 Ohms ± 10	
Recommended Excitation Voltage		5 to 20 Volts DC	
Maximum Excitation Voltage		25 Volts DC	
Safe Overload		150% of Rated Capacity	
Ultimate Overload		300% of Rated Capacity	
Sealing		Meets IP67 Standards	
Material			
• Element		17-4 Stainless Steel	
• Canister		300 Series Stainless Steel	

WIRING

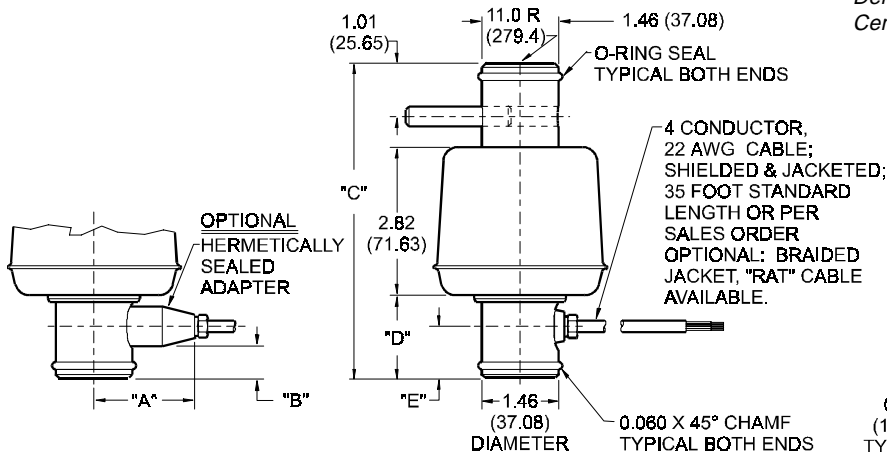
FUNCTION	COLOR
+ Excitation	Red
- Excitation	Black
+ Output	Green
- Output	White

50K (25t)

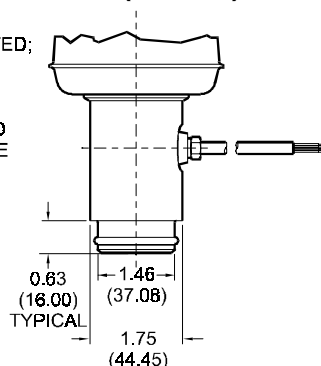


CAPACITY	A	B	C	D	E
50K (25t)	1.91 (48.51)	0.62 (15.75)	6.00 (152.40)	1.59 (40.39)	1.00 (25.4)
100K (35t - 50t)	2.08 (52.83)	2.01 (51.05)	8.86 (225.04)	3.04 (77.22)	2.01 (51.05)

Dimensions are in inches. Capacities are in pounds.
 Deflection is ±10%. Specifications are subject to change.
 Certified drawings are available.



100K (35t, 50t)



Les Balances LEDUC & THIBEAULT Inc.

Montréal : (514) 239-7060 Mercier : (450) 691-2111 Fax : (450) 691-6764
 visit our website at www.leduc-thibeault.com E-mail: info@leduc-thibeault.com