

## MODEL 65092 TWA

### TANK WEIGHING ASSEMBLY

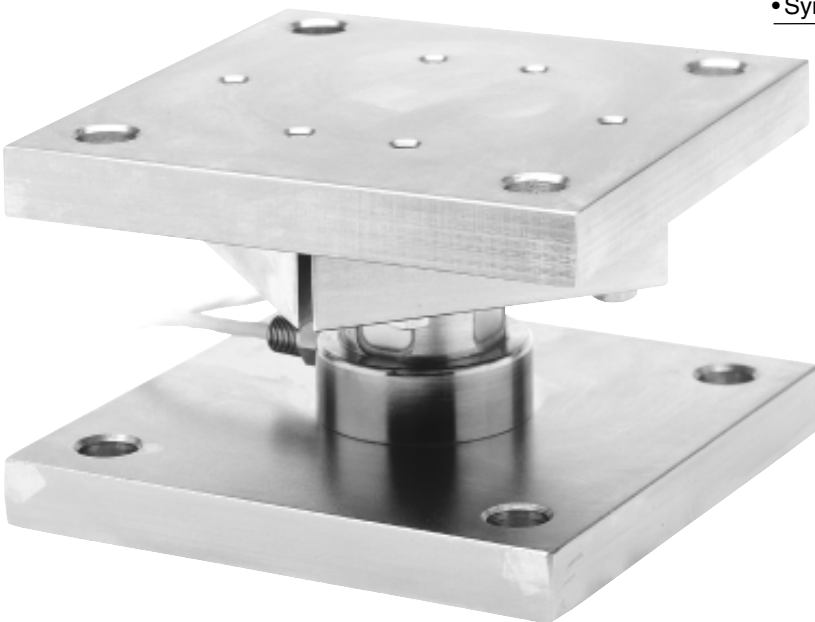
#### APPLICATIONS

- Tank, bin, and silo weighing
- Level and inventory monitoring
- High capacity weighing

#### FEATURES

- Capacity ranges of 50,000 to 1,000,000 pounds
- Mounts directly to foundation or structural support
- Self-checking with provisions for thermal expansion and contraction
- No check rods required
- Monolithic element design
- Exceptional sideloading tolerance
- Load cells have matched outputs for multi-cell systems
- Low profile/low deflection
- Symmetrical mounting bolt pattern simplifies installation

- Integral conduit adaptor
- Exceeds structural requirements of Uniform Building Code Standards for Seismic Zones 1 and 2
- **Sensorgage™** sealed to IP67 standards
- **Cell Guard™** Two Year Warranty
- Factory Mutual System Approved for Classes I, II, III; Divisions 1 and 2; Groups A through G.  
Also, **Non-Incendive** ratings (No Barriers!).
- ISO 9001 Certified manufacturing facilities



Les Balances LEDUC & THIBEAULT Inc.

Montréal : (514) 239-7060    Mercier : (450) 691-2111    Fax : (450) 691-6764  
visit our website at [www.leduc-thibeault.com](http://www.leduc-thibeault.com)    E-mail: [info@leduc-thibeault.com](mailto:info@leduc-thibeault.com)

# Model 65092 TWA Performance Specifications

Rated Capacities (lbs): 50K, 100K, 200K, 300K, 500K, 750K, 1M

Full Scale Output (FSO): 2.0 mV/V  $\pm$  0.25%

Accuracy Class:

Standard

Combined Error % FSO

$\leq .10$

Non-Linearity % FSO

$\leq .07$

Hysteresis % FSO

$\leq .03$

Creep Error % FSO

$\leq 0.03$  in 20 minutes

Non-Repeatability % FSO

$\leq .01$

Zero Balance % FSO

$\leq 1.0$

Insulation Resistance

$> 1000$  Mohms at 50VDC

Temperature Effect on:

•Zero % FSO/ $^{\circ}$ F

$\leq 0.0015$

•Output % of Load/ $^{\circ}$ F

$\leq 0.0008$

Compensated Temperature Range

14 $^{\circ}$  to 104 $^{\circ}$ F / -10 $^{\circ}$  to 40 $^{\circ}$ C

Operating Temperature Range

0 $^{\circ}$  to 150 $^{\circ}$ F / -18 $^{\circ}$  to 65 $^{\circ}$ C

Storage Temperature Range

-60 $^{\circ}$  to 185 $^{\circ}$ F / -50 $^{\circ}$  to 85 $^{\circ}$ C

Input Resistance

400-500 Ohms

Output Resistance

349-355 Ohms

Recommended Excitation Voltage

10 Volts DC

Maximum Excitation Voltage

18 Volts DC

Safe Sideload

30% of Rated Capacity

Safe Overload

150% of Rated Capacity

Ultimate Overload:

•Compression

300% of Rated Capacity

•Tension

100% of Rated Capacity

Sealing

Meets IP67 Standards

Material:

Alloy Tool Steel or Stainless Steel  
Steel

•Load Cell

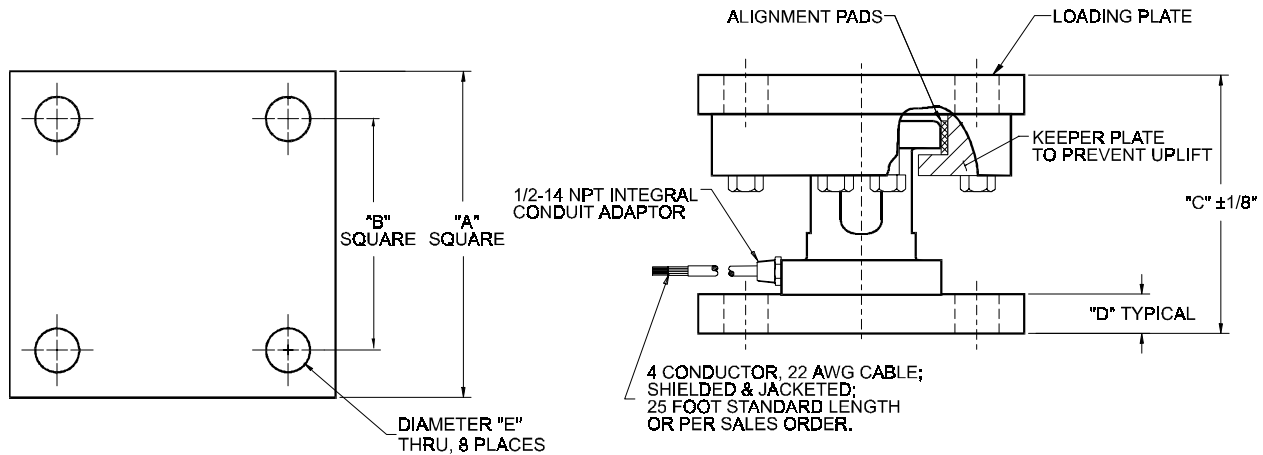
•Assembly

Finish:

Electroless Nickel Plated  
Zinc Plated

•Load Cell

•Assembly



## WIRING

FUNCTION	COLOR
+ Excitation	Red
- Excitation	Black
+ Output	Green
- Output	White

CAPACITY	A	B	C	D	E	Weight
50K	8.00	6.00	5.13	0.94	0.78	100.0
100K	10.00	7.50	7.38	1.19	1.12	150.0
200K	12.00	8.50	9.50	1.44	1.63	225.0
300K	14.00	9.50	11.00	1.94	1.63	350.0
500K	17.00	12.00	12.63	2.44	2.13	650.0
750K	24.00	16.50	21.75	3.90	3.50	1,800.0
1M	24.00	16.50	21.75	3.90	3.50	2,000.0

Dimensions are in inches. Capacities are in pounds. Specifications are subject to change. Certified drawings are available.

Les Balances LEDUC & THIBEAULT Inc.

Montréal : (514) 239-7060    Mercier : (450) 691-2111    Fax : (450) 691-6764  
visit our website at [www.leduc-thibeault.com](http://www.leduc-thibeault.com)    E-mail: [info@leduc-thibeault.com](mailto:info@leduc-thibeault.com)