

MODEL 65088

STAINLESS STEEL MULTI-COLUMN COMPRESSION LOAD CELL

APPLICATIONS

- Truck scales
- Railroad track scales
- Tank, bin and hopper weighing

FEATURES

- Capacity ranges of 25,000 to 200,000 pounds,
10 to 100 metric tons
- Stainless steel, welded seal construction
- Single piece multi-column design
- 3 times more side load capacity than other designs
- Integral conduit adaptor
- 35 feet (10.7m) standard cable length
- Replacement for RTI models CSP and CSPM
- Trade certified for NTEP Class III L:10,000 divisions;
Class III:5,000 divisions and OIML R60 3,000 divisions
 - Welded **Sensorgage™** sealed to IP67 standards
 - **Cell Guard™** Two Year Warranty
 - ISO 9001 Certified manufacturing facilities



Les Balances LEDUC & THIBEAULT Inc.

Montréal : (514) 239-7060 Mercier : (450) 691-2111 Fax : (450) 691-6764
visit our website at www.leduc-thibeault.com E-mail: info@leduc-thibeault.com

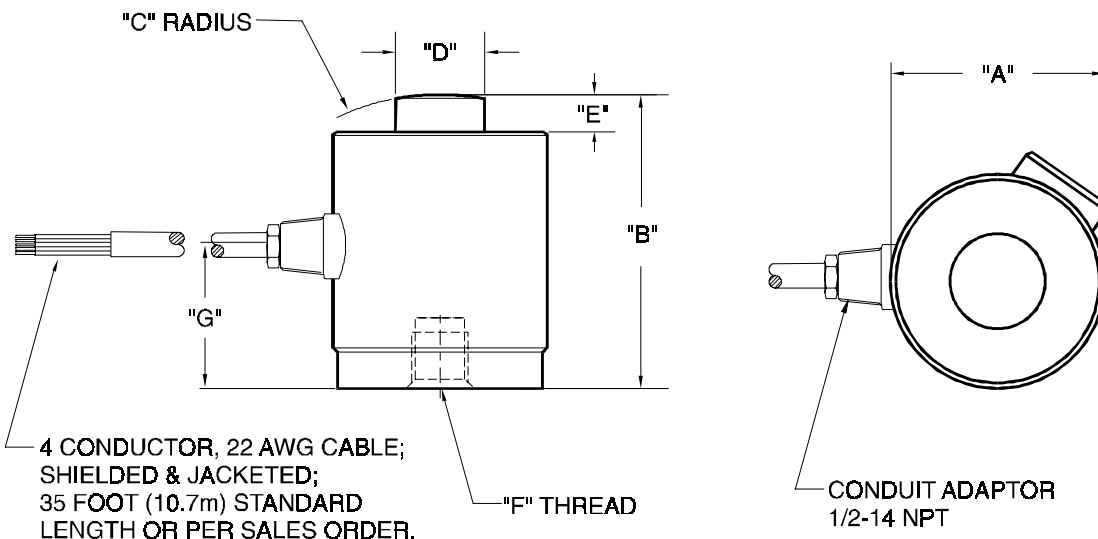
Model 65088 Performance Specifications

Rated Capacities (lbs): 25K, 50K, 100K, 200K

(metric tons): 10t, 25t, 40t, 50t, 100t

Full Scale Output (FSO): 2.0 mV/V \pm 0.25%

Accuracy Class:	Standard	NTEP III	NTEP IIII	OIML R60
Max. No. Verification Intervals	--	5,000 Multiple	10,000 Multiple	3,000
Combined Error % FSO	$\leq .03$	--	--	--
Non-Linearity % FSO	$\leq .03$	--	--	--
Hysteresis % FSO	$\leq .02$	--	--	--
Creep Error % FSO	$\leq .03$ in 20 minutes	--	--	--
Temperature Effect on:				
• Zero % FSO/°F	≤ 0.0015	--	--	--
• Output % of Load/°F	≤ 0.0008	--	--	--
Non-Repeatability % FSO			$\leq .01$	
Zero Balance % FSO			≤ 1.0	
Insulation Resistance		≥ 1000 Mohms at 50 VDC		
Compensated Temperature Range		14° to 104°F / -10° to 40°C		
Operating Temperature Range		0° to 150°F / -18° to 65°C		
Storage Temperature Range		-60° to 185°F / -50° to 85°C		
Input Resistance		450 \pm 4.5 Ohms		
Output Resistance		480 \pm 4.8 Ohms		
Recommended Excitation Voltage		5 to 20 Volts DC		
Maximum Excitation Voltage		25 Volts DC		
Safe Sideload		30% of Rated Capacity		
Safe Overload		150% of Rated Capacity		
Ultimate Overload		400% of Rated Capacity		
Sealing		Meets IP67 Standards		
Material		Welded, Stainless Steel		



CAPACITY	A	B	C	D	E	F	G	Deflection	Weight
25K, 50K (10t, 25t)	3.00 (76.2)	3.25 (82.6)	6.00 (152.4)	1.25 (31.7)	0.40 (10.2)	1/2-20 UNF - 2B x .31 Deep (M12 x 1.75 - 6H x 8 Deep)	1.68 (42.7)	0.003 (0.1)	6.0 (3.0)
100K (40t, 50t)	4.00 (101.6)	5.00 (127.0)	6.00 (152.4)	2.31 (58.7)	0.51 (13.0)	3/4-16 UNF - 2B x .56 Deep (M20 x 2.5 - 6H x 14 Deep)	2.49 (63.2)	0.006 (0.2)	15.0 (7.0)
200K (100t)	6.00 (152.4)	7.25 (184.2)	17.00 (431.8)	3.13 (79.5)	1.04 (26.4)	3/4-16 UNF - 2B x .75 Deep (M20 x 2.5 - 6H x 19 Deep)	3.28 (83.3)	0.006 (0.2)	40.0 (18.0)

Dimensions are in inches (millimeters). Capacities are in pounds (metric tons). Deflection is \pm 10%. Specifications subject to change. Certified drawings available.

Les Balances LEDUC & THIBEAULT Inc.

Montréal : (514) 239-7060 Mercier : (450) 691-2111 Fax : (450) 691-6764
 visit our website at www.leduc-thibeault.com E-mail: info@leduc-thibeault.com