

## MODEL 65084

### STAINLESS STEEL, WELDED SEAL SHEAR BEAM LOAD CELL

#### APPLICATIONS

- Hostile environments
  - Food & beverage processing
  - Chemical and plastics processing
  - Pharmaceutical and biomedical processing
- Washdown and Clean-In-Place environments
- Tank, bin and hopper weighing
- Batching, blending and mixing systems

#### FEATURES

- Rated capacities of 1,000 to 10,000 pounds,  
500 kilograms to 5 metric tons
- Stainless steel, welded seal construction
- Integral conduit adaptor with teflon jacketed cable available
- Replacement for RTI model SSB and HBM model SB3
- Trade certified for OIML R60 3,000 divisions
- **Sensorgage™** sealed to IP66/67 standards
- **Cell Guard™** Two Year Warranty
- Factory Mutual System Approved for Classes I, II, III;  
Divisions 1 and 2; Groups A through G.  
Also, **Non-Incendive** ratings (No Barriers!)
- ISO 9001 Certified manufacturing facilities



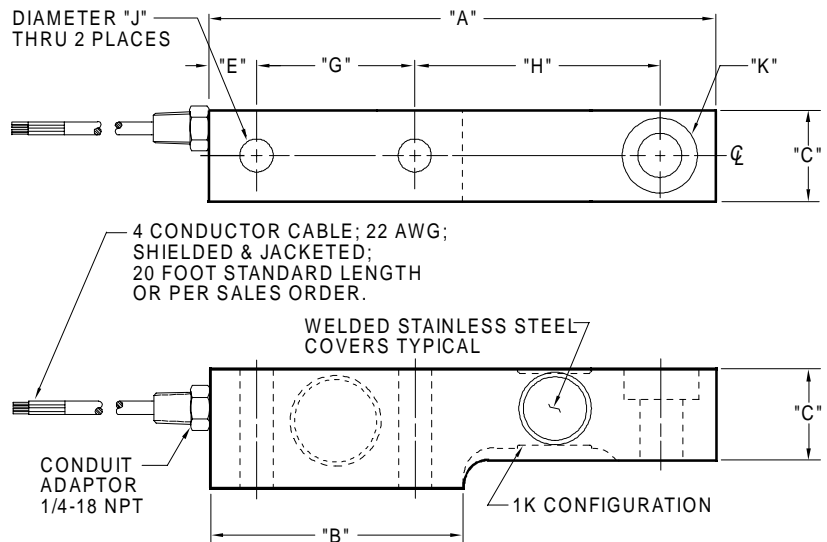
Les Balances LEDUC & THIBEAULT Inc.

Montréal : (514) 239-7060    Mercier : (450) 691-2111    Fax : (450) 691-6764  
visit our website at [www.leduc-thibeault.com](http://www.leduc-thibeault.com)    E-mail: [info@leduc-thibeault.com](mailto:info@leduc-thibeault.com)

# Model 65084 Performance Specifications

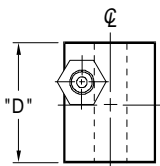
Rated Capacities (lbs): 1K, 2K, 5K, 10K  
 (kg/metric tons): 500kg, 2t, 5t  
 Full Scale Output (FSO): 2.0 mV/V ± 0.10%

Accuracy Class:	<u>Standard</u>	<u>OIML R60</u>
Max. No. Verification Intervals	--	3,000
Combined Error % FSO	≤ .03	--
Non-Linearity % FSO	≤ .03	--
Hysteresis % FSO	≤ .02	--
Creep Error % FSO	≤ .03 in 20 minutes	--
Temperature Effect on:		
•Zero % FSO/°F	≤ 0.0015	--
•Output % of Load/°F	≤ 0.0008	--
Non-Repeatability % FSO	≤ .01	
Zero Balance % FSO	≤ 1.0	
Insulation Resistance	> 1000 Mohms at 50VDC	
Compensated Temperature Range	14° to 104°F / -10° to 40°C	
Operating Temperature Range	0° to 150°F / -18° to 65°C	
Storage Temperature Range	-60° to 185°F / -50° to 85°C	
Input Resistance	346-353 Ohms	
Output Resistance	346-353 Ohms	
Recommended Excitation Voltage	10 Volts DC	
Maximum Excitation Voltage	15 Volts DC	
Sideload Rejection Ratio	500:1	
Safe Sideload	100% of Rated Capacity	
Safe Overload	150% of Rated Capacity	
Ultimate Overload	300% of Rated Capacity	
Sealing	Meets IP67 Standards	
Material	Stainless Steel	



## WIRING

FUNCTION	COLOR
+ Excitation	Green
- Excitation	Black
+ Output	White
- Output	Red



CAPACITY	A	B	C	D	E	G	H	J	K	Deflection	Weight
1K - 5K (500kg, 2t)	8.00 (203.2)	4.00 (101.6)	1.44 (36.6)	1.88 (47.7)	0.75 (19.05)	2.50 (63.5)	3.87 (98.3)	0.53 (13.5)	Ø0.68 THRU C'BORE Ø1.19 x 0.47	0.013 - 0.025 (0.330 - 0.635)	4.0 (1.8)
10K (5t)	9.25 (235.0)	4.62 (117.3)	1.88 (47.75)	2.75 (69.9)	0.81 (20.6)	2.63 (66.8)	4.88 (124.0)	0.88 (22.4)	Ø1.00 THRU C'BORE Ø1.63 x 0.62	0.025 - 0.032 (0.635 - 0.812)	6.5 (2.9)

Dimensions are in inches (mm). Capacities are in pounds (kg/metric tons). Deflection is ±10%. Specifications are subject to change. Certified drawings are available.

## Les Balances LEDUC & THIBEAULT Inc.

Montréal : (514) 239-7060 Mercier : (450) 691-2111 Fax : (450) 691-6764  
 visit our website at [www.leduc-thibeault.com](http://www.leduc-thibeault.com) E-mail: [info@leduc-thibeault.com](mailto:info@leduc-thibeault.com)