

MODEL 65083H

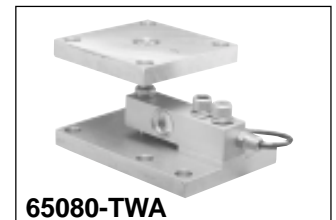
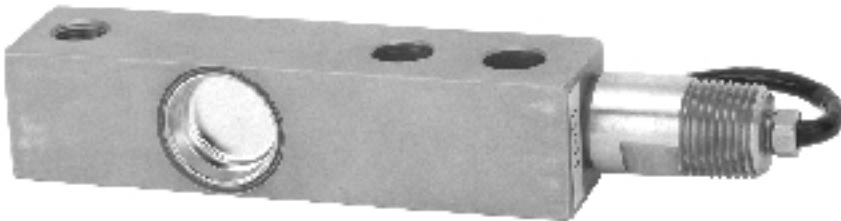
HERMETICALLY SEALED STAINLESS STEEL SHEAR BEAM LOAD CELL

APPLICATIONS

- Hostile environments
 - Food & beverage processing
 - Chemical and plastics processing
 - Pharmaceutical and biomedical processing
- Washdown and Clean-In-Place environments
- High performance weighing modules and assemblies
- Tank and reactor weighing

FEATURES

- Rated capacities of 1,000 to 10,000 pounds;
500kg to 5 metric tons
- Stainless steel, welded seal construction
- Integral conduit adaptor available
- Companion weigh module is Model 65080
Stainless Steel *TantaMount*
- Interchangeable with Sensortronics model 65023 shear beam
- Trade certified for NTEP Class III:5,000 Divisions and
Class III L:10,000 Divisions; OIML R60:3,000 Divisions
- Hermetically **Sensorgage™** sealed to IP66/68 standards
- **Cell Guard™** Two Year Warranty
 - Factory Mutual System Approved for Classes I, II, III;
Divisions 1 and 2; Groups A through G.
Also, **Non-Incendive** ratings (No Barriers!).
 - ISO 9001 Certified manufacturing facilities



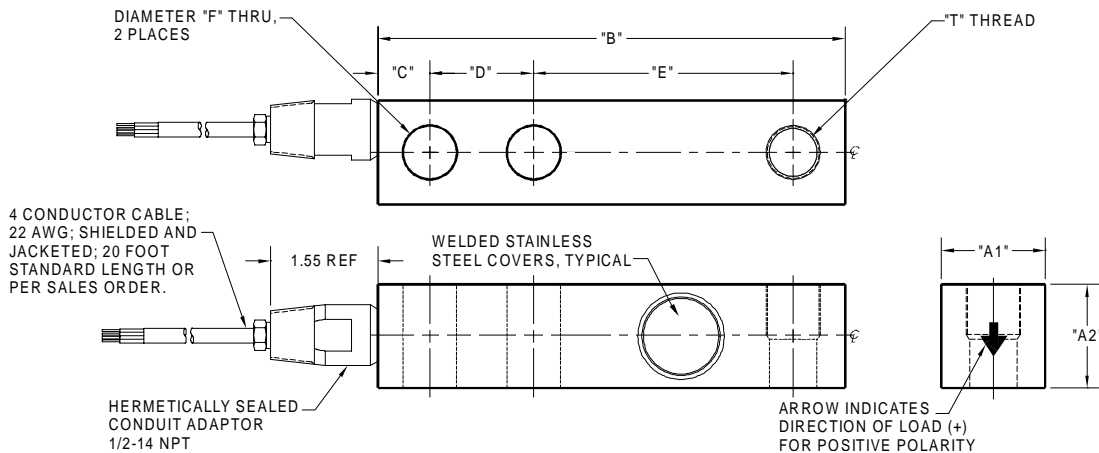
Model 65083H Performance Specifications

Rated Capacities (lbs): 1K, 1.5K, 2.5K, 4K, 5K, 10K

(kg/metric tons): 500kg, 1t, 2t, 3t, 5t

Full Scale Output (FSO): 2.0 mV/V ± 0.25%

Accuracy Class:	Standard	NTEP III	NTEP III L	OIML R60
Max. No. Verification Intervals	--	5,000 Multiple	10,000 Multiple	3,000
Combined Error % FSO	≤ 0.03	--	--	--
Non-Linearity % FSO	≤ 0.03	--	--	--
Hysteresis % FSO	≤ 0.02	--	--	--
Creep Error % FSO	≤ 0.03 in 20 minutes	--	--	--
Temperature Effect on:				
• Zero % FSO/°F	≤ 0.0015	--	--	--
• Output % of Load/°F	≤ 0.0008	--	--	--
Non-Repeatability % FSO			≤ .01	
Zero Balance % FSO			≤ 1.0	
Insulation Resistance		> 1000 Mohms at 50VDC		
Compensated Temperature Range		14° to 104°F / -10° to 40°C		
Operating Temperature Range		0° to 150°F / -18° to 65°C		
Storage Temperature Range		-60° to 185°F / -50° to 85°C		
Input Resistance		343-357 Ohms		
Output Resistance		349-355 Ohms		
Recommended Excitation Voltage		10 Volts DC		
Maximum Excitation Voltage		15 Volts DC		
Sideloading Rejection Ratio		500:1		
Safe Sideloading		100% of Rated Capacity		
Safe Overload		150% of Rated Capacity		
Ultimate Overload		300% of Rated Capacity		
Sealing		Meets IP66/68 Standards		
• Hermetic		Glass-to-Metal Cable Seals		
Material		17-4 PH Stainless Steel		



CAPACITY	A1	A2	B	C	D	E	F	G-Thread	Deflection	Weight
1K - 4K (500kg - 2t)	1.22 (31.0)	1.22 (31.0)	5.12 (130.0)	0.62 (16.0)	1.00 (25.0)	3.00 (76.0)	0.53 (13.0)	1/2-20 UNF-2B, .53 x .61 DP C' BORE (M12x1.75-6H)	0.012 (.305)	2.4 (1.1)
5K-SE* (500kg - 2t)	1.22 (31.0)	1.22 (31.0)	5.12 (130.0)	0.62 (16.0)	1.00 (25.0)	3.00 (76.0)	0.53 (13.0)	1/2-20 UNF-2B, .53 x .61 DP C' BORE (M12x1.75-6H)	0.012 (.305)	2.4 (1.1)
5K - 10K (3t - 5t)	1.50 (38.0)	1.50 (38.0)	6.75 (171.0)	0.75 (19.0)	1.50 (38.0)	3.75 (95.0)	0.78 (20.0)	3/4-16 UNF-2B, .78 x .75 DP C' BORE (M20x2.5-6H)	0.030 (0.762)	3.9 (1.8)

Dimensions are in inches (millimeters). Capacities are in pounds (kg/metric tons). Deflection is ±10%. Specifications are subject to change. Certified drawings are available. *SE denotes "Small Envelope". A 5K capacity is available in the 1K/4K dimensional envelope.

WIRING

FUNCTION	COLOR
+ Excitation	Red
- Excitation	Black
+ Output	Green
- Output	White

Les Balances LEDUC & THIBEAULT Inc.

Montréal : (514) 239-7060 Mercier : (450) 691-2111 Fax : (450) 691-6764
 visit our website at www.leduc-thibeault.com E-mail: info@leduc-thibeault.com