

MODEL 65016-0104W

WELDED, STAINLESS STEEL DOUBLE-ENDED SHEAR BEAM LOAD CELL

APPLICATIONS

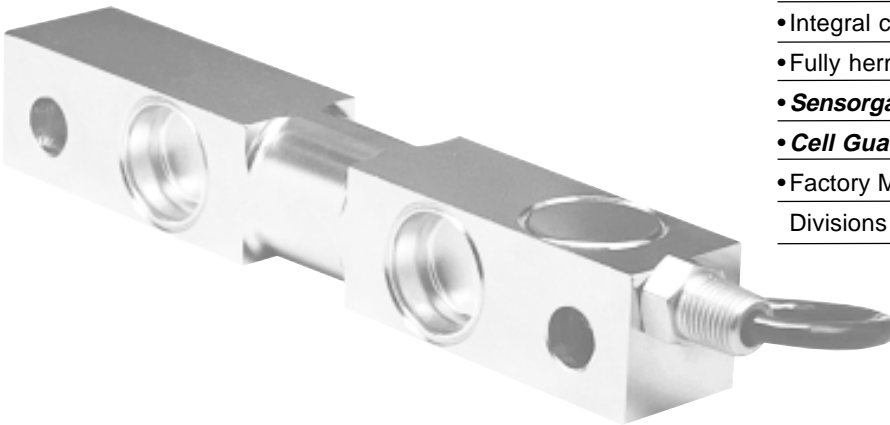
- Hostile environments
 - Food and beverage processing
 - Chemical and plastics processing
 - Pharmaceutical and biomedical processing
- Tank, bin and silo weighing
- Batching, blending and mixing systems
- Level and inventory monitoring

FEATURES

- Rated capacities of 1,000 to 75,000 pounds
- Stainless steel, welded seal construction
- Stainless steel weigh module compatibility
- Insensitive to side loads and bending moments
- High output - well suited to high deadload/low liveload applications
- Load cells have matched outputs for multi-cell systems
- Excellent combined error and repeatability
- Integral conduit adaptor
- Fully hermetically sealed available
- **Sensorgage™** sealed to IP66/67 standards
- **Cell Guard™** Two Year Warranty
- Factory Mutual System Approved for Class I, II, III; Divisions 1 & 2; Groups A through G.

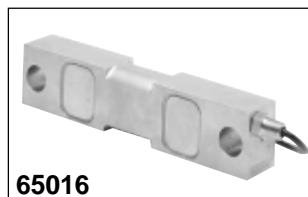
Also, **Non-Incendive** ratings (No Barriers!).

- ISO 9001 Certified manufacturing facilities



ISO
9001

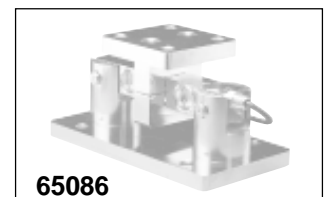
Factory
Mutual
System
Approved



65016



65016-TWA



65086

Les Balances LEDUC & THIBEAULT Inc.

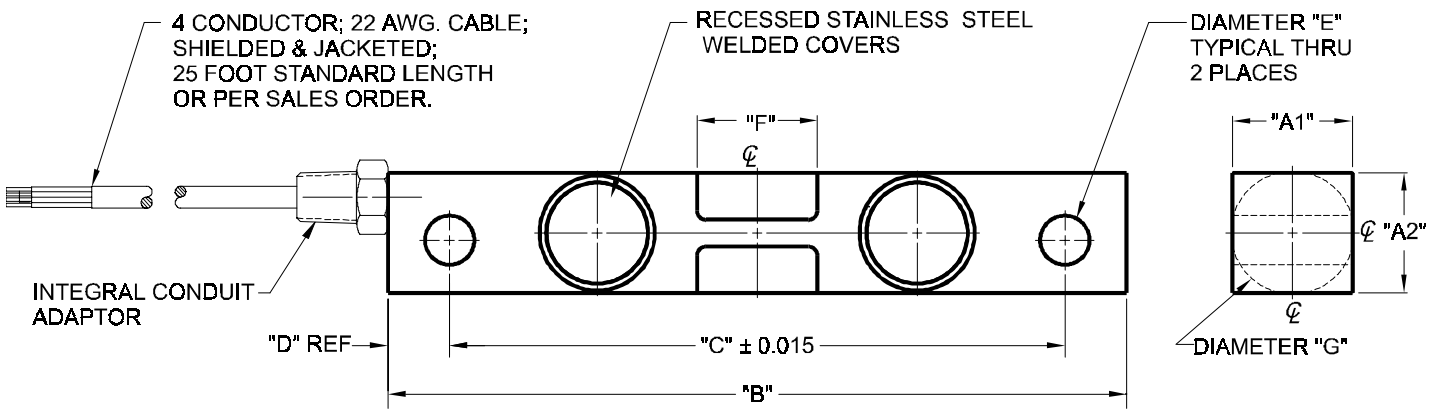
Montréal : (514) 239-7060 Mercier : (450) 691-2111 Fax : (450) 691-6764
visit our website at www.leduc-thibeault.com E-mail: info@leduc-thibeault.com

Model 65016-0104W Performance Specifications

Rated Capacities (lbs): 1K, 1.5K, 2.5K, 5K, 10K, 15K, 25K, 35K, 50K, 75K

Full Scale Output (FSO): 3.0 mV/V \pm 0.25%

Accuracy Class:	<u>Standard</u>
Combined Error % FSO	$\leq .03$
Non-Linearity % FSO	$\leq .03$
Hysteresis % FSO	$\leq .03$
Creep Error % FSO	≤ 0.03 in 20 minutes
Non-Repeatability % FSO	$\leq .01$
Zero Balance % FSO	≤ 1.0
Insulation Resistance	> 1000 Mohms at 50VDC
Temperature Effect on:	
• Zero % FSO/°F	≤ 0.0015
• Output % of Load /°F	≤ 0.0008
Compensated Temp. Range	14° to 104°F / -10° to 40°C
Operating Temp. Range	0° to 150°F / -18° to 65°C
Storage Temp. Range	-60° to 185°F / -50° to 85°C
Input Resistance	700 Ohms
Output Resistance	699-707 Ohms
Recommended Excitation Voltage	15 Volts DC
Maximum Excitation Voltage	25 Volts DC
Safe Sideload	100% of Rated Capacity
Safe Overload	150% of Rated Capacity
Ultimate Overload	300% of Rated Capacity
Sideload Rejection Ratio	500:1
Sealing:	
• Welded Version	Meets IP67 Standards
• Hermetic Version	Meets IP68 Standards
Material	17-4 PH Stainless Steel



WIRING		CAPACITY	A1	A2	B	C	D	E	F	G	Thread	Deflection	Weight
+	Excitation	1K - 5K	1.22	1.22	7.50	6.25	0.62	0.50	1.12	1.25	1/4-18NPT	0.016 - 0.020	3.0
-	Excitation	10K - 25K	1.44	1.94	8.75	7.50	0.62	0.81	1.62	1.99	1/4-18NPT	0.020 - 0.040	5.7
+	Output	35K	1.44	2.44	8.75	7.50	0.62	0.81	1.62	2.50	1/4-18NPT	0.040	7.1
-	Output	50K - 75K	2.44	2.94	13.50	11.50	1.00	1.31	3.25	2.99	1/2-14NPT	0.053 - 0.070	21.6

Dimensions are in inches. Capacities are in pounds. Deflection is $\pm 10\%$. Specifications are subject to change. Certified drawings are available.

Les Balances LEDUC & THIBEAULT Inc.

Montréal : (514) 239-7060 Mercier : (450) 691-2111 Fax : (450) 691-6764
 visit our website at www.leduc-thibeault.com E-mail: info@leduc-thibeault.com