

MODEL 65016 TWA

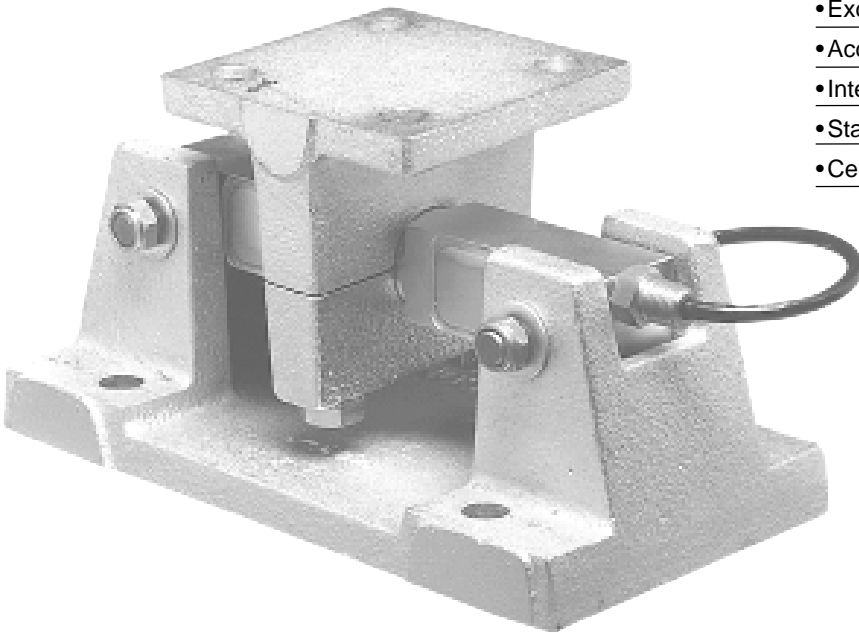
TANK WEIGHING ASSEMBLY

APPLICATIONS

- Tank, bin and hopper weighing
- Silo weighing
- Batching, blending, mixing, level and inventory monitoring

FEATURES

- Capacity ranges of 1,000 to 300,000 pounds
- Mounts directly to the floor or structural support
- Self-checking with provisions for thermal expansion and contraction
- Insensitive to side loads and bending moments
- High output - well suited to high deadload/low liveload applications
- Load cells have matched outputs for multi-cell systems
- Excellent combined error and repeatability
- Accuracies exceed 0.1% with agitated loads
- Integral conduit adaptor
- Stainless steel, welded seal assemblies available
- Certified for Uniform Building Code Seismic Zones 1 thru 4
 - **Sensorgage™** sealed to IP67 standards
 - **Cell Guard™** Two Year Warranty
 - Factory Mutual System Approved for Classes I, II, III; Divisions 1 and 2; Groups A through G. Also, **Non-Incendive** ratings (No Barriers!).
 - ISO 9001 certified manufacturing facilities



ISO
9001

Factory
Mutual
System
Approved

UBC
UNIFORM
BUILDING CODE
SEISMIC ZONE 4



65016



65016-0104W

Les Balances LEDUC & THIBEAULT Inc.

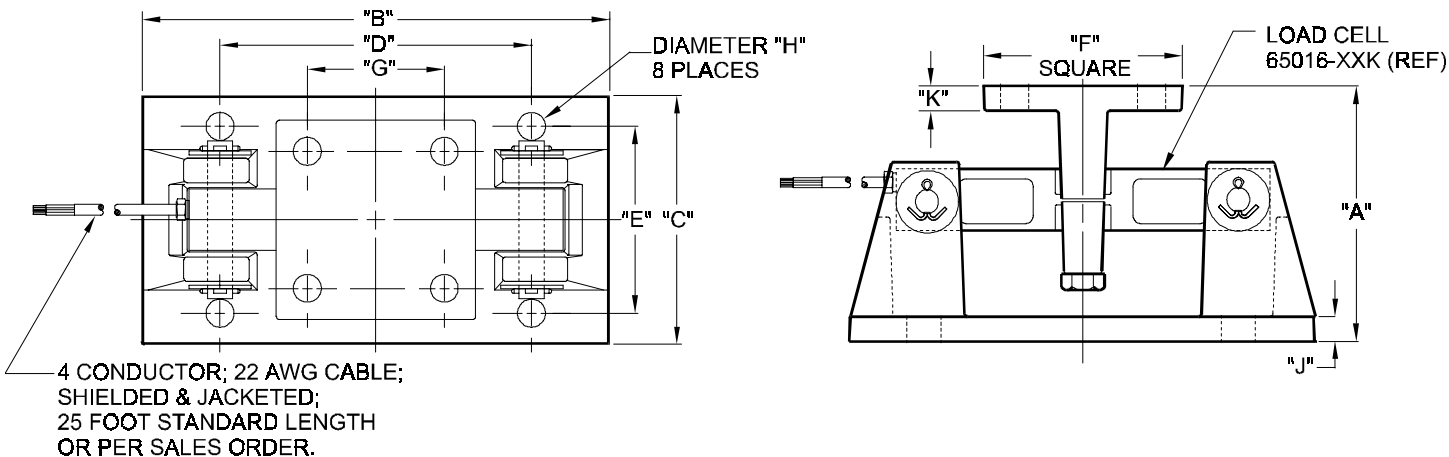
Montréal : (514) 239-7060 Mercier : (450) 691-2111 Fax : (450) 691-6764
visit our website at www.leduc-thibeault.com E-mail: info@leduc-thibeault.com

Model 65016 TWA Performance Specifications

Rated Capacities (lbs): 1K, 1.5K, 2.5K, 5K, 10K, 15K, 25K, 35K, 50K, 75K, 100K, 125K⁽¹⁾
 Full Scale Output (FSO): 3.0 mV/V \pm 0.25%

Accuracy Class:	<u>Standard</u>
Combined Error % FSO	\leq .03
Non-Linearity % FSO	\leq .03
Hysteresis % FSO	\leq .02
Creep Error % FSO	\leq 0.03 in 20 minutes
Non-Repeatability % FSO	\leq .01
Zero Balance % FSO	\leq 1.0
Insulation Resistance	> 1000 Mohms at 50VDC
Temperature Effect on:	
• Zero % FSO/°F	\leq 0.0015
• Output % of Load /°F	\leq 0.0008
Compensated Temperature Range	14° to 104°F / -10° to 40°C
Operating Temperature Range	0° to 150°F / -18° to 65°C
Storage Temperature Range	-60° to 185°F / -50° to 85°C
Input Resistance	686-714 Ohms
Output Resistance	699-707 Ohms
Recommended Excitation Voltage	15 Volts DC
Maximum Excitation Voltage	25 Volts DC
Safe Sideload	100% of Rated Capacity
Safe Overload	150% of Rated Capacity
Ultimate Overload	300% of Rated Capacity
Sideload Rejection Ratio	500:1
Sealing	Meets IP67 Standards
Material:	
• Load Cell	Alloy Tool Steel or Stainless Steel
• Assembly	Cast Steel
Finish (Alloy Tool Steel):	
• Load Cell	Electroless Nickel Plated
• Assembly	Zinc Plated

⁽¹⁾ Consult factory for higher capacities.



WIRING		CAPACITY	A	B	C	D	E	F	G	H	J	K	Weight
FUNCTION	COLOR	1K - 5K	5.13	9.35	5.00	6.25	3.75	4.00	2.75	0.56	0.90	0.50	22.0
+ Excitation	Red	10K - 35K	7.90	12.00	8.00	7.50	6.00	8.00	6.00	0.78	0.75	0.75	73.0
- Excitation	Black	50K - 75K	9.30	16.25	12.00	11.50	9.50	9.00	6.50	0.78	1.00	1.00	172.0
+ Output	Green	100K -125K	11.75	23.50	14.00	20.00	12.00	10.00	8.00	1.12	1.50	1.50	250.0
- Output	White												

Dimensions are in inches. Capacities are in pounds. Specifications are subject to change. Certified drawings are available.

Les Balances LEDUC & THIBEAULT Inc.

Montréal : (514) 239-7060 Mercier : (450) 691-2111 Fax : (450) 691-6764
 visit our website at www.leduc-thibeault.com E-mail: info@leduc-thibeault.com