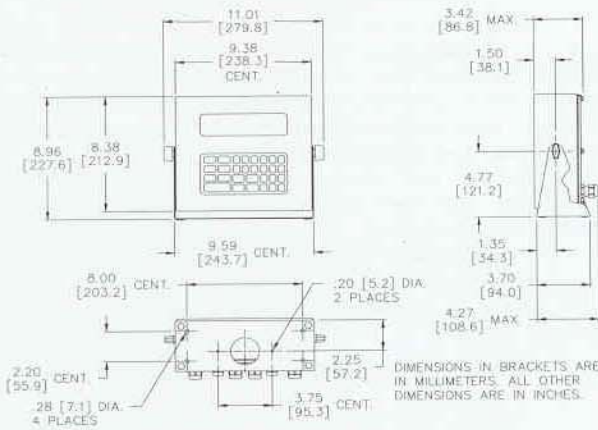


SPECIFICATIONS

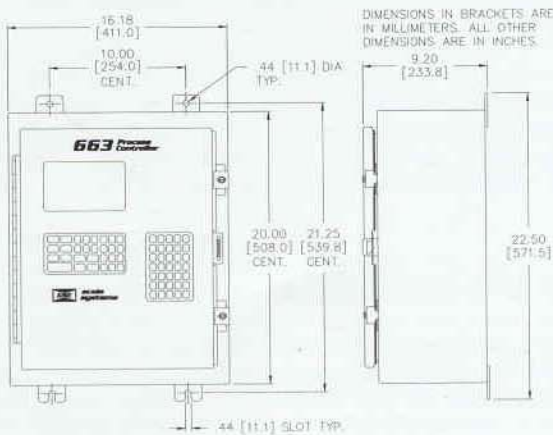
Model 660/661/662

Enclosure: All Models, Stainless Steel, NEMA 4X (IP66) Design
 Display: 660 - VFD, 6 Digit 0.75" (19mm) with 2x5 Matrix
 661 - VFD, 4 x 20, 0.31" (8mm)
 662 - LCD, 8 x 40 Back-lit, 3 font sizes



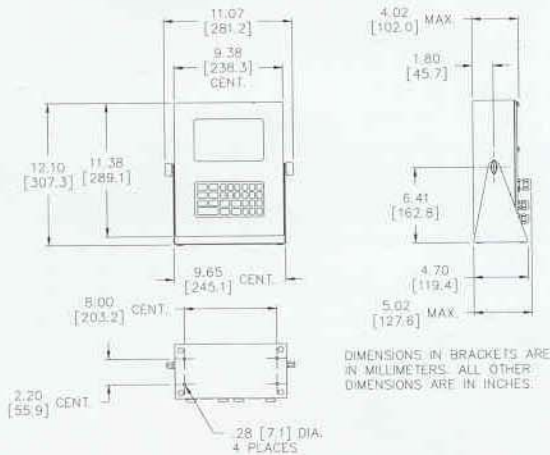
Model 663

Enclosure: Mild Steel, Powder Coat, NEMA 12 Design
 Stainless Steel, NEMA 4X Design
 Display: 2 available display options:
 • VFD, 6 digit 0.75" (19mm) w/ 2x5 and 4x20 0.31" (8mm)
 • LCD, 16 x 40 Back-lit, 3 font sizes
 Note: A mild steel, powder coat 24" x 30" encl. is available



Model 665

Enclosure: Stainless Steel, NEMA 4X (IP66) Design
 Display: 2 available display options:
 • VFD, 6 digit 0.75" (19mm) w/ 2x5 and 4x20 0.31" (8mm)
 • LCD, 16 x 40 Back-lit, 3 font sizes



WEIGHING PERFORMANCE

- Resolution 100,000d (+/-500,000 internal)
- A/D Conversion 60Hz
- Calibration Selectable, 5 point linearization or enter loadcell mV/V F.S.
- A/D Filtering GSE FIR (Finite Input Response) Filter with selectable display rate update
- Units of Measure Programmable, user defined
- Zero Adjustment Selectable, 0.01 – 100% F.S.
- Span Adjustment 0.1 – 20mV/V
- Non-Linearity 0.005%FS, L.C. dependent
- Operating Temperature -10°C – +40°C
- Excitation Power 14 – 350 ohm bridges
- Input Signal Connections 4 or 6 conductors with sense leads
- Excitation Current 400 mA, short circuit protected
- Excitation Voltage 10VDC, short circuit protected
- Time/Date Clock Real-time clock
- Warranty 2 Year

ELECTRICAL

- Power Input AC – 90 - 250VAC @ 50/60Hz, DC – 10 - 32VDC
- Fuse 0.8A Slo-Blow
- DC Output +5VDC, +24VDC

PROCESS CONTROL

- I/O Scan Rate 16ms maximum
- Number of I/O 128 combination, input and output
- Maximum Voltage Ratings 3 VDC – 200 VDC @ 1A, 24VAC – 250 VAC @ 1A or 24VAC – 250VAC @ 3A
- I/O Timer Resolution 10ms
- PDIO Frequency 8Hz – 100KHz
- PDIO Voltage 5VDC
- Program Timer Res. 2ms up/down
- Counter Input Freq. PDIO 8Hz – 100KHz

COMMUNICATIONS

- Port 1 RS232 Full Duplex or RS485 Multi-drop optional or 20mA current loop
- Port 2 and 3 RS232 Full Duplex
- Port 4 RS232 Full Duplex or TTL interface to 4x20 VFD
- Protocols Modbus™, Device Net, Profibus pending
- Baud Rates 150 – 115K bps

OPTIONS AND ACCESSORIES

- **Multi-Scale Module** - additional signal inputs, total of 8
- **Analog Output Module** - 16 bit signal output, 0-10VDC, 0-20mA or 4-20mA, software adj. zero/gain, total of 8
- **Database Module** - 256K, 1M, or 2M Byte
- **RS485 Module** - isolated multi-drop w/ 251 devices max, half or full duplex up to 4000 feet, 115K bps max
- **I/O Relays** - AC/DC @ 1-3A, optically isolated
- **Alpha Keypad** - elastomeric, available on the 663 only
- **SCR Module** - max. load 1.75A RMS, 20-280VAC, 50/60Hz
- **GSE Reflash** - download firmware revisions and compiled 'C' code via RS232 or BDM port
- **GSE User C Development Kit** - write, compile, emulate in 'C'
- **20mA Current Loop** - isolated TX-active or passive, RX-passive, 9600 bps max, 12VDC, 1000 feet



scale systems

A United Dominion Company



22705 Heslip Drive, Novi, MI 48375 USA
 Telephone: 248-380-8700 • Fax: 248-380-5029
 Toll Free: 800-755-7875 • E-mail: gsesales@gse-inc.com
 In Florida: 800-237-6284
 In Canada: 403-948-9921
 In Europe: Phone: (49) 2173916399-0
 Fax: (49) 2173916399-9