

FAIRBANKS®

ACCESSORIES FOR THE 2800 SERIES INTRINSICALLY SAFE INSTRUMENT WITH INTALOGIX® TECHNOLOGY



The 2800 Series Intrinsic Safe Instrument with Intalogix Technology can be tailored to your application by interfacing with a variety of Fairbanks accessories.

2800 SERIES PRODUCT FAMILY WILL MEET YOUR NEEDS

Fairbanks has made it easy to create the perfect intrinsically safe environment for your operation with the 2800 Series Instrument and one or more of the following low cost Fairbanks accessories.

2860 DATA CONVERTER ①

The 2860 is a safe area, fiber optic converter box. This accessory receives fiber optic communication from the 2800 via 5806 fiber optic cable and converts the data to RS 232, 20 mA, RS 485 or Smart 4 to 20 mA for communication with printers, PCs and other technologies. The 2860 can be located up to 200 feet away from the 2800 instrument.

2825 SAFE AREA POWER SUPPLY ①a

When interfaced with the 2800, the 2825 provides a safe area AC power source that eliminates the need for battery power. The 2825 is Factory Mutual approved for Groups A or B when used with the 2802 Intrinsic Safe Controller. It's FM approved for all Groups, Classes and Divisions when used with the 2880 Analog Load Cell Interface. Enclosure identical to 2860.

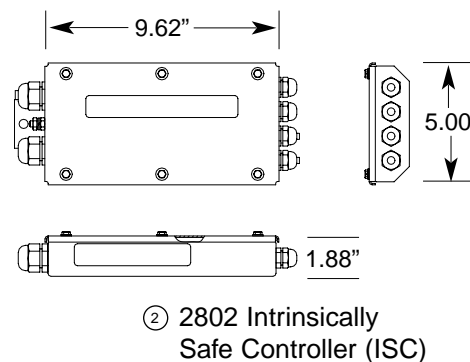
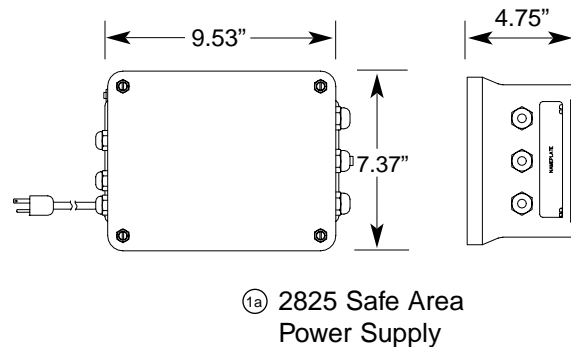
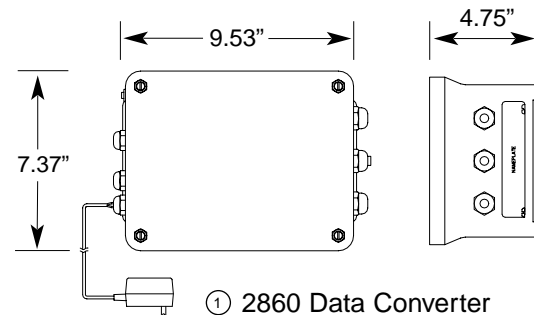
QuickFacts™

Models and specifications subject to change without notice.
Printed in the USA on recycled paper. © Fairbanks Scales Inc.

2802 INTRINSICALLY SAFE CONTROLLER ②

Fairbanks' 2802 is a digital load cell interface box that converts a standard analog load cell signal to a digital signal. The 2802 provides optic isolation. Each ISC controls up to four load cells.

2800 ACCESSORIES:



Call your Fairbanks representative :
Les Balances Leduc & Thibeault Scales Inc.

Montréal : (514) 239-7060 Mercier : (450) 691-2111

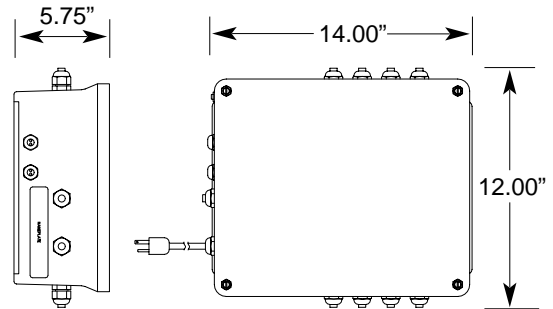
FAIRBANKS®

ACCESSORIES FOR THE 2800 SERIES INTRINSICALLY SAFE INSTRUMENT

2850 RELAY BOX ③

The 2850 accessory is a Safe Area Setpoint Relay Box. It holds eight type 'C' relays, which are included with the accessory, and connects to the 2800 instrument via 5806 fiber optic cable offering four modes of setpoint operation.

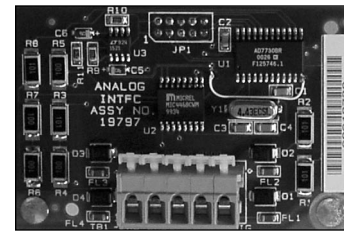
Relay specifications: 24 VDC; 1 CA@28VDC, 120 VAC; 1/3 HP @ 120 VAC, 240 VAC



③ 2850 Relay Box

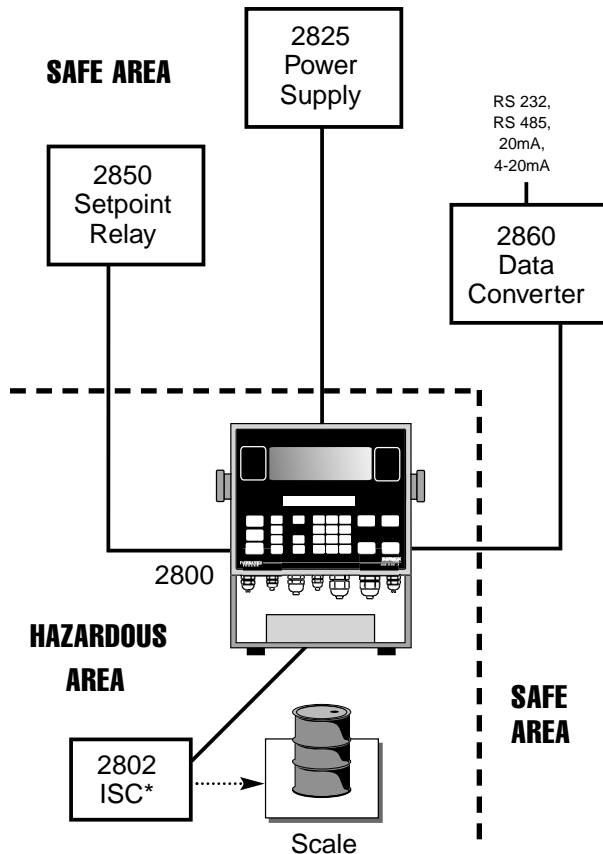
2880 ANALOG LOAD CELL INTERFACE ④

The 2880 plugs inside the 2800 instrument and allows up to 16 (350 or 1,000 ohm) analog load cells to be interfaced. The user can replace virtually any other Intrinsically Safe instrument, even in analog applications.



④ 2880 Analog Load Cell Interface

2800 Indicator System Schematics



* 2802 Intrinsically Safe Controller installs inside the scale.

QuickFacts™

Models and specifications subject to change without notice.
Printed in the USA on recycled paper. © Fairbanks Scales Inc.

Call your Fairbanks representative :
Les Balances Leduc & Thibeault Scales Inc.

Montréal : (514) 239-7060 Mercier : (450) 691-2111